



ETWGW Newsletter

May -June 2019

Editor: Thomas Ehrnschwender

Contact: tjehrn@gmail.com

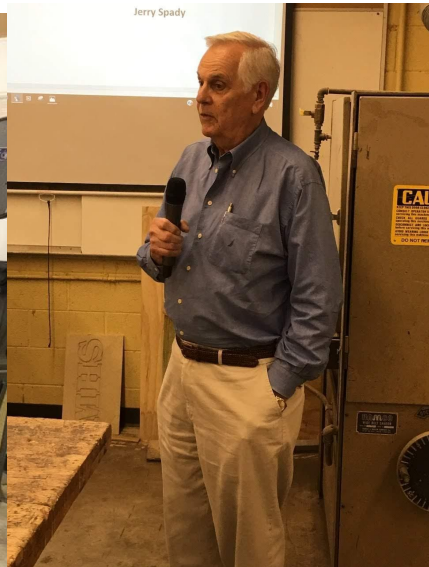
Membership Meeting Presentations

The next general meeting will be: July 8, 2019. Guild member Joe Cafferata will be discussing hand planes and their use.

Everyone is encouraged to show his or her work at "Show-N-Tell." Reminder - please fill out a Show-N-Tell Card for each item at our meetings to ensure proper credit is given to each presenter in our newsletter. For projector slide presentations of your Show-N-Tell item, please limit the number of slides to 5, and provide the newsletter editor with a copy of the slides to tjehrn@gmail.com

ETWGW General Meetings are held:

- 2nd Monday of January, March, May, July, September and November
- Time: 6:30 pm
- Place: Maryville High School, Woodworking Shop
- Special events are held in the school Ruby Tuesday Room



Al Hudson turned 100 and is surrounded by many friends and memories!

Message from Our President Stephen Shankles

Hello all, I hope the warmer weather finds you well and in your shops. A quick reminder that June is here and with it our 10% discount at the Knoxville Woodcraft for this month and next. You will need an active membership card to take advantage of the discount.

Thank you to everyone that made it out to the last meeting. We had a great time celebrating Al Hudson's 100th birthday and seeing some of Jerry Spady's outstanding work with his Fineply (patent pending). I hope you can join us at the July meeting where Joe Cafferata will be discussing hand planes and their use. Be sure to bring your hand plane questions if you've got them.

In the meantime, get out in your shops and get to work. The Master Woodworkers Show is coming up this November, but entries must be photographed and submitted by **AUGUST 1ST**. I encourage everyone to seriously consider entering. This show is our guild's primary showcase to the public and the more members represented the better. It's also a great time to hang out with other woodworkers and talk in depth about our craft.

Thank you all and see you in July,

Stephen

Stephen Shankles
President ETWG
(865) 603-4368
shankles43@yahoo.com

20th Master Woodworkers Show Update

Well, it's a waiting game now. The Call to Entry has gone out, we've been in touch with our fellow guilds in the area and they have put it in their newsletters. We have visited other guilds and given presentations about the show. And we've sent out emails to every one of the makers who asked to be informed about the show. Now we just need to wait and see what comes in. We do hope you have all been in the shop working on your masterpiece for the show.

Perhaps this would be a good time to go over the process of entering a juried show. If you have never entered a juried show before now, this is a good one to see how it's done. First you visit the website [Master Woodworkers Show](#) and download an application. The first part of the application is the standard stuff, name and address, that sort of thing. Next is the artist biography. If your piece/pieces get into the show this is the bio that will be seen by the public, posted next to your work (usually written in third person and a good rule here is to be brief and not to take yourself too seriously). Next you get to read all the rules, nothing too scary here just what we need to do to keep

everything equal for everyone and make the life of the show committee a bit easier. Now a note on rule #5; if you take a picture with a digital camera it will be a jpeg image and it will most likely be at least the size we ask for, so don't worry. Now if you want to be really nice you would rename the pictures file name with your name and the submission number. Next is page 2 and that's where you give us the particulars about each piece. A couple of notes on this stuff. The description of the piece is like your bio; this is what the public will see next to your work. On the "sale price", your piece does not have to be for sale. You can just indicate "not for sale" but you still need to put a price of the work down. If the work is NFS we will not post the price but we still need it for insurance reasons. That's about it. Just make sure you email it by August 1st. If you have any questions just call Scott DeWaard at 865-681-4798, and he will do his best to help.

What happens after you send in your Application

This is where we get to see all the great work submitted and put them into a slide show. We take your pictures and add some information like the size, materials used and maybe some of your description if it is helpful to understand the piece. Everything the jurors need to understand the piece, except the name of the maker or his bio. Nothing to indicate who made the piece is included. The job of the jurors is to select the pieces for the show only on the merits of the work itself. The jurors do have one other thing to consider. We need to tell them how many pieces we can fit into the gallery. This is sometimes where it gets difficult, as great the Emporium Building is for the show, we can only show so many pieces. Sometimes work we would like to show ends up being cut simply because we don't have the room. This is the tough job of the jurors, and why we on the show committee are grateful to them; it's not an easy job.

After that we send out the letter to the makers and let them know the outcome of the juror's selections. Then we get to start to work again laying out the show and getting the word out to the public.

Scott

Scott DeWaard
(865) 681-4798
sdewaard@bellsouth.net

How can you help?

Obviously submitting your best work to be included in the jurying process is the first thing you can do to help support the show. There will be lots of other opportunities to help with the show including but not limited to helping to unload, arrange and install pieces as they arrive, act as greeters throughout the duration of the show and just be present to represent the Guild. After the show help is needed to strike the show and leave the gallery as we found it. The show is very important to the Guild,

representing the standards the Guild strives to achieve and support, and making the public aware of the East Tennessee Woodworkers Guild and how it supports regional makers.

New Initiatives

- The ETWG website is being updated, make sure you go check it out [ETWG](#)
- Dues of \$35 are now payable for 2019 if you haven't already paid. With active membership you will receive 10% discount at Woodcraft during June, July and August.
- If you do not have a picture in your profile, please add one by logging into the website and going to your profile.

Education by Bill Key

In May the Guild held three classes for the members.

These included:

- Bowl Turning Demonstration on May 4
- Introduction to Dovetails on May 11
- Sharpening on May 25.

Summaries of the three May classes:



Bowl Turning - Gordon Fowler gave a three hour demonstration of his approach to turning bowls which was accompanied by a video on the preparation of a bowl blank starting with a segment of a tree trunk. Members of ETWG as well as members of Smoky Mountain Woodturners attended the class. Gordon is a local turner who has been making bowls for over 20 years.



Introduction to Dovetails - Bill Key taught this class introducing beginners to the process, tools and skills needed for making hand-cut dovetails.

The class provided an overview to designing dovetail layout and some of the keys for producing well designed and well made dovetail joints. Hands-on practice was limited to beginning the students development of hand sawing skills. Numerous handouts were provided to the students. Bill demonstrated his knowledge, and the amount of information presented deserved a longer session. Bill offered to meet on an ad hoc basis to help the attendees further develop their skills.

Sharpening Class - this well attended class was taught by Lou Mansur and Ron Clayton and was an updated version of a class taught in prior years. Below is Lou's summary of the class:



The sharpening class was held at Lou Mansur's workshop on Saturday, May 25. There were 10 participants, including seven students, the instructors Lou and Ron Clayton, and education coordinator Bill Key. Main aspects of sharpening were covered, including principles, proven methods, types of sharpening media, tools and jigs. Primary emphasis was on hand sharpening of plane blades, chisels and scrapers. The class touched on a number of other areas requested, such as power sharpening, turning tools, and carving gouges. Instruction and demonstrations filled out the morning. The afternoon was dedicated to practice by the participants, who succeeded in restoring old damaged blades, prepared and honed new blades and grappled with issues specific to certain blades and cutting tools. Students received handouts from the instructors, summarizing the key points and demonstrations. These are also available on the ETWG website.

Future Classes - At this time, no further classes have been scheduled. A planning exercise, however, will begin soon for an Arrowmont weekend to be held in the spring of 2020. Please provide your comments and suggestions to Bill Key for this future event.

If you are interested in a particular subject or would like to teach a class, please contact Bill Key.

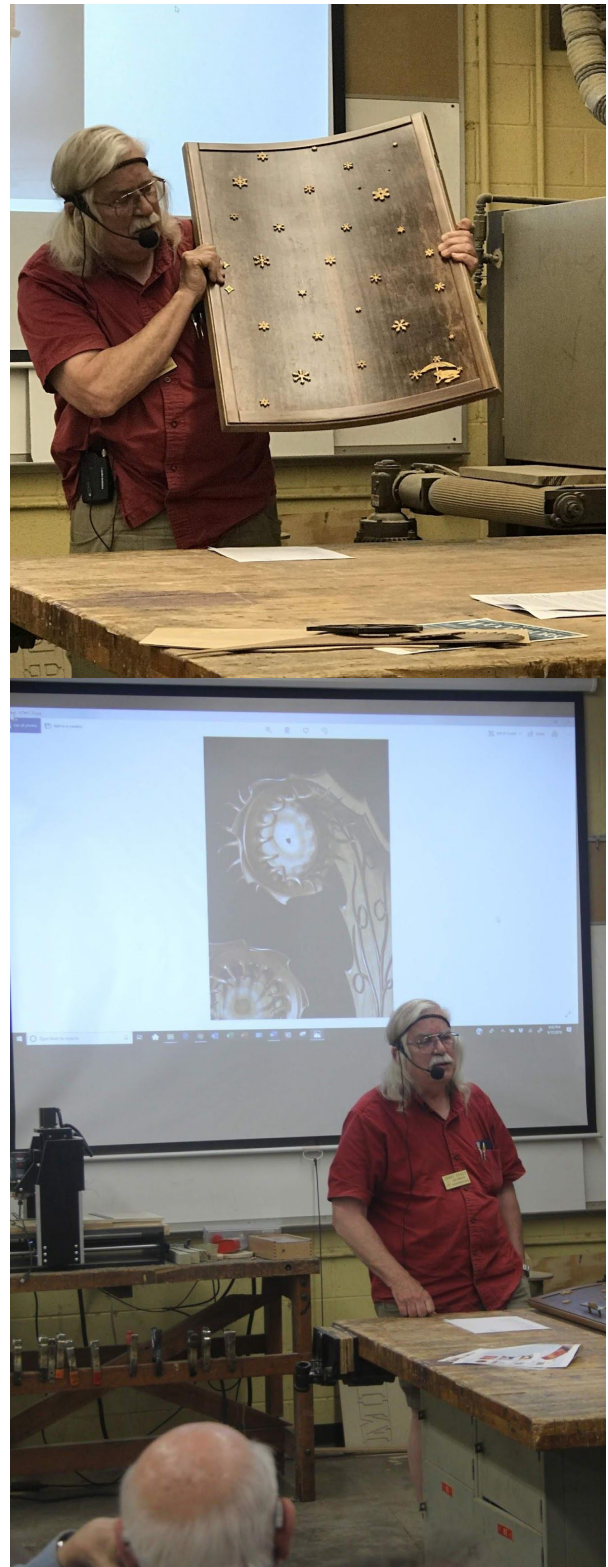
Bill

keyws1@gmail.com

Feature Presentation by Jerry Spady

Jerry Spady presented his unique use of finelyply (patent pending), development, refinement and construction methods.

Fineply was developed by Jerry and refined over the past 18 years. It was fascinating to see such a large collection of work combined with the artist/woodworker's commentary and personal thoughts. Jerry's approach to woodworking as reflected in the body of work he presented truly demonstrates an ability to exploit the properties of wood to the point of discovering a totally new woodworking material and methodology. Jerry manipulates fineply to create delicate sculptural forms and introduce 3 dimensional figures and textures in his work. There is an excellent article written by Jerry, *Fineply A remarkable new form of shop built ply-wood can stretch your imagination!*, in the 2009 Spring issue of *Woodwork* magazine, [Woodwork 09 Spring](#).

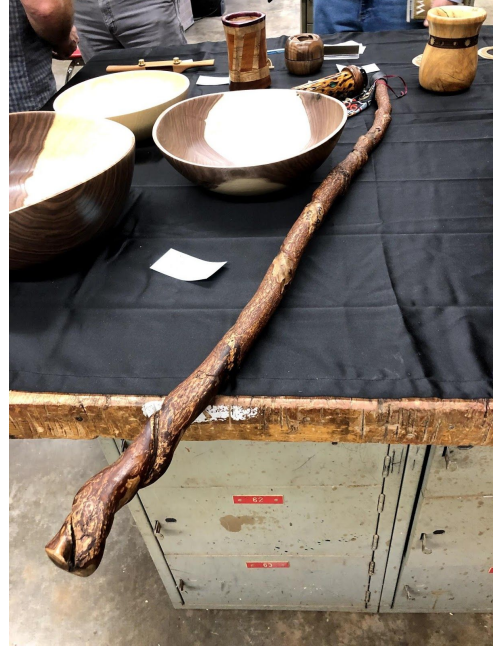


Show-N-Tell

Members presenting work that they have made is always encouraged and is an important part of learning from each other.



*“Woodworking matters. It’s more than a pastime or hobby - being a woodworker means that you know the satisfaction and pride that comes from using your hands and mind to build beautiful functional objects, and that you’re as interested in the process as the outcome. Amid the speed and chaos of the modern world, woodworking gives us a place where we can slow down, pay attention, and take the time to do things right.” - Aime Ontario Fraser, *Your First Workshop: A Practical Guide to What You Really Need*, 2005*



Three bowls, walnut and ash and a twisted sassafras walking stick made especially for Al Hudson by Lou Mansur.



Sandy Pittard presented a hollow form made of sycamore and a platter made out of red maple.



Name: Dan Land
Description:
Kaleidoscope
Wood Species:
Cholla Cactus



Kaleidoscope by Dan Land made of cholla cactus.



Brian Horais showed a mahogany and maple twisted turning, a jar made of black gum with additive manufactured (3d printing) decorative band, and a walnut venus box with an operable aperture.



Tony Grenis presented a dining chair of walnut and spalted pecan made with wood blocks strung through the frame with a continuous rope.



Keith Clark shows a hand made spokeshave made of cherry.

Beads of Courage Boxes

Beads of Courage is a program that supports children undergoing treatment for a serious illness. Boxes are always needed for these children. If you have any questions, contact Drue Hogland: email dlhogland@me.com

Note: minimum size of boxes shall have a recommended interior dimensions of 4" x 6" x 4" for flat work boxes and interior dimensions of 6" diameter by 5" deep for turned boxes. From time to time boxes are needed that are perhaps a bit smaller or a bit larger so if anyone has one a little different please bring them in, and we will make a child very happy with it.

Juried Membership

Members are encouraged to continue improving their woodworking skills for Juried status. If you are having a woodworking problem with your project, please feel free to contact any of the Juried members listed on our website. They will provide points to look for or improve upon.

"I think it's very important to have a feedback loop, where you're constantly thinking about what you've done and how you could be doing it better, I think that's the single best piece of advice: constantly think about how you could be doing things better and questioning yourself." - Elon Musk

Please refer to "Standards Committee Guidelines" found at: etwg.org to make arrangements for the Committee to review your work.

Annual membership dues are \$35

Dues are payable by the middle of January each year, If you haven't paid yet you can: mail your check to Charlie Cutler or bring your check to the next meeting

East Tennessee Woodworkers' Guild (ETWG)
c/o Charlie Cutler
1631 Laramie Lane.
Seymour, TN 37865

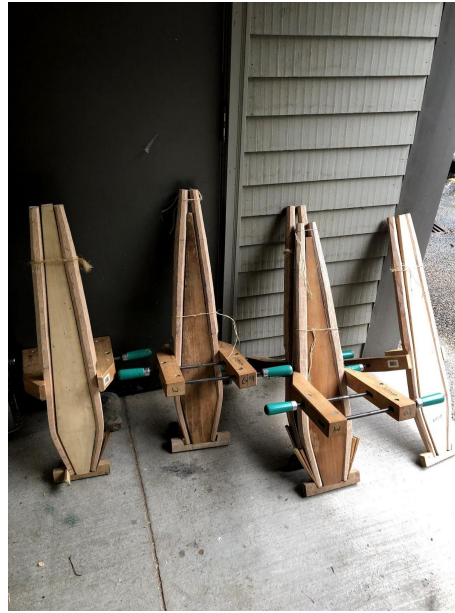
Scholarships

Congratulations to Brent Quarles who was awarded the second 2019 Rick McGill Scholarship in the amount of \$500, and David Reeves who was awarded the first Founders Scholarship in the amount of \$250. Brent has a strong interest in green woodworking, and will be taking a weeklong class at Arrowmont in June. The class will be based on the book *Make a Chair from a Tree* by Jennie (John) Alexander, and will focus on building a ladder back post and rung chair from a tree using hand tools. David will be attending a workshop at the Barn on Whites Run in Monterey, VA. It will be a workshop

on making tools, especially brass nesting squares. “ I am intrigued by handtools used for generations and that many of our ancestors made their own tools from quality metals and woods.” We look forward to a future presentations on these experiences. There is still one remaining Founders Scholarship available for 2019. Members are encouraged to review the website for the process of submitting a request for a scholarship.

Here are a few pictures from the week that scholarship recipients Tom Ehrnschwender and Brent Quarles spent making chairs at Arrowmont. There were 10 students and the class was taught by Andy McFate a maker from Asheville, and assisted by artist in residence Eric Cannizaro.





The class culminated with the successful completion of 10 beautiful chairs. A sincere thank you to the guild for the scholarships that assisted in our participating in this great learning experience at Arrowmont! We are very fortunate to have such a great facility in our backyard.

Arrowmont Workshops

Arrowmont provides 50% discount on one workshop fee per person per year. Residents 18 years or older of Blount, Cocke, Jefferson, Knox or Sevier counties in Tennessee are eligible. For further information and schedule go to: arrowmont.org

Website Links of Interest

These links may vary from newsletter to newsletter so check back

gnhw.org	leakesantiques.com	paulsellers
woodwisperer.com	penlandschool	arrowmont
tntech.edu/craftcenter	wwgoa.com	hyperkitten
smokymountainwoodturners	aaw	curtisbuchanan
fvwwc.org	americaod.com/federalperi	eliabizzarri
woodtalkonline.com	chairnotes	barthespoon

Guild Staff

Board of Directors and Special Advisors

President	Stephen Shankles
Director and Vice President	Ralph Gonzalez
Director and Treasurer	Charlie Cutler
Director and Secretary	Tom Ehrnschwender
Director	Jim Vogelsang
Director	Lou Mansur
Director	Bill Key
Special Advisor to the Board	Al Hudson

Committee Chairs and Project Coordinators

Education Committee Chair	Bill Key
Programs Committee Chair	Open
Standards Committee Chair	Lou Mansur
Membership Committee Chair	Ralph Gonzalez
Door Prizes Coordinators	Hal Flynt & Tom Wallin
Library Coordinator	Tom Ehrnschwender
Nametags Coordinator	Ralph Gonzalez
Web/Audio Visual	Jim Vogelsang
Newsletter Editor	Tom Ehrnschwender
Photographers	Ron Clayton, Brent Quarles, Pat Bryan and Tom Zachman

Volunteers are needed to fill the following open positions:

- Program Committee Chairperson
- Assistant (back-up) AV equipment technician